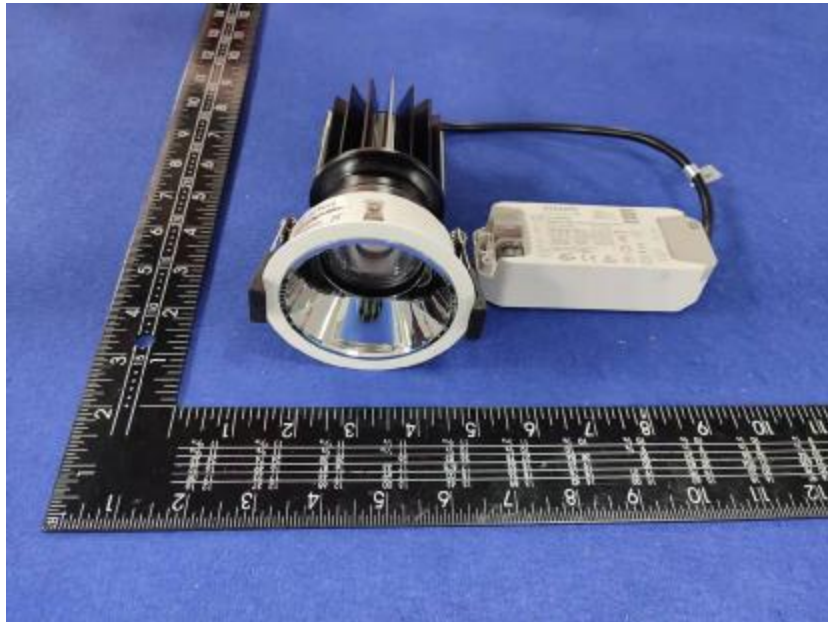


Luminaire Photograph



Light Output Ratio:	80.3%	
Luminaire Power:	20.63 W	
SHR Nominal:	0.75	Calculated using the TM5
SHR Maximum:	0.80	fine grid method.

C Range: 0 - 360DEG
C Interval: 30.0DEG
Test Speed: HIGH
Temperature: 25.3DEG
Operators: Zoe
Test Date: 2022-2-26

g Range: 0 - 180DEG
g Interval: 1.0DEG
Test System: EVERFINE GO-SPEX500_V1 SYSTEM V2.00.416
Humidity: 65.0%
Test Distance: 3.160m [K=1.0000]
Remarks: LAMP: CMU1013-0000-000N0U0A30G Ra:90
LENS: PM-1083C 50R
DRIVER: 9290 028 089 500mA
30minutes warm-up

LUMINOUS INTENSITY DISTRIBUTION DIAGRAM

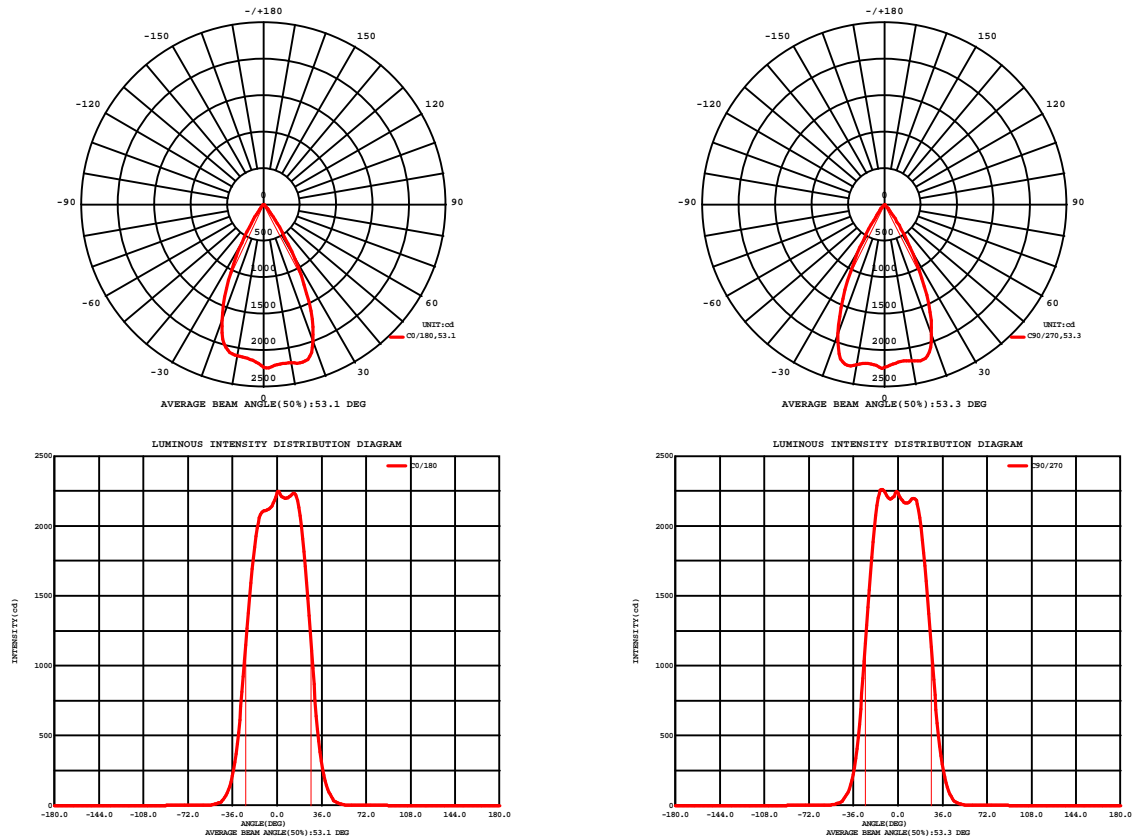


Fig. C0/C180

Fig. C90/C270

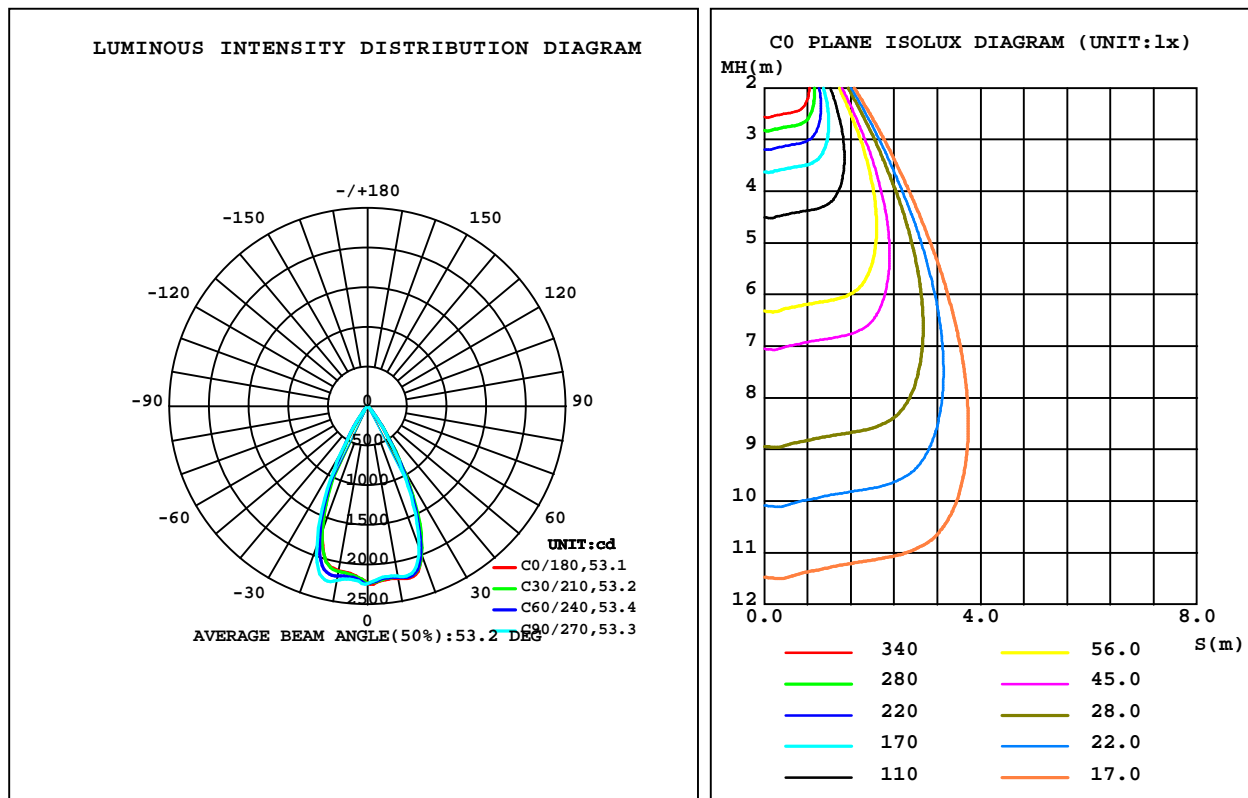
C Range: 0 - 360DEG
C Interval: 30.0DEG
Test Speed: HIGH
Temperature: 25.3DEG
Operators: Zoe
Test Date: 2022-2-26

Range: 0 - 180DEG
Interval: 1.0DEG
Test System: EVERFINE GO-SPEX500_V1 SYSTEM V2.00.416
Humidity: 65.0%
Test Distance: 3.160m [K=1.0000]
Remarks: LAMP: CMU1013-0000-000N0U0A30G Ra: 90
LENS: PM-1083C 50R
DRIVER: 9290 028 089 500mA
30minutes warm-up

LUMINAIRE PHOTOMETRIC TEST REPORT

Test:U:220.29V I:0.0967A P:20.631W PF:0.9658 Freq:49.99Hz Lamp Flux:2048.03x1 lm		
NAME: 2118.532-ACOT-37	TYPE:	WEIGHT:
SPEC.:3000K	DIM.:	SERIAL No.:2202260112
MFR.: RISE	SUR.:0.003316625m2	Shielding Angle:

DATA OF LAMP		PHOTOMETRIC DATA Eff: 79.71 lm/W			
MODEL	CREE	I _{max} (cd)	2262	S/MH(C0/180)	0.76
NOMINAL POWER(W)	20	LOR(%)	80.3	S/MH(C90/270)	0.78
RATED VOLTAGE(V)	220	TOTAL FLUX(lm)	1644.6	h UP,DN(C0-180)	0.0,41.6
NOMINAL FLUX(lm)	2048.03	CIE CLASS	DIRECT	h UP,DN(C180-360)	0.0,38.7
LAMPS INSIDE	1	h up(%)	0.0	CIBSE SHR NOM	0.75
TEST VOLTAGE(V)	220	h down(%)	80.3	CIBSE SHR MAX	0.80



C Range: 0 - 360DEG
C Interval: 30.0DEG
Test Speed: HIGH
Temperature:25.3DEG
Operators:Zoe
Test Date:2022-2-26

g Range: 0 - 180DEG
Interval: 1.0DEG
Test System:EVERFINE GO-SPEX500_V1 SYSTEM V2.00.416
Humidity:65.0%
Test Distance:3.160m [K=1.0000]
Remarks: LAMP:CMU1013-0000-000N0U0A30G Ra:90
LENS:PM-1083C 50R
DRIVER:9290 028 089 500mA
30minutes warm-up

ZONAL FLUX DIAGRAM

ZONAL FLUX DIAGRAM:

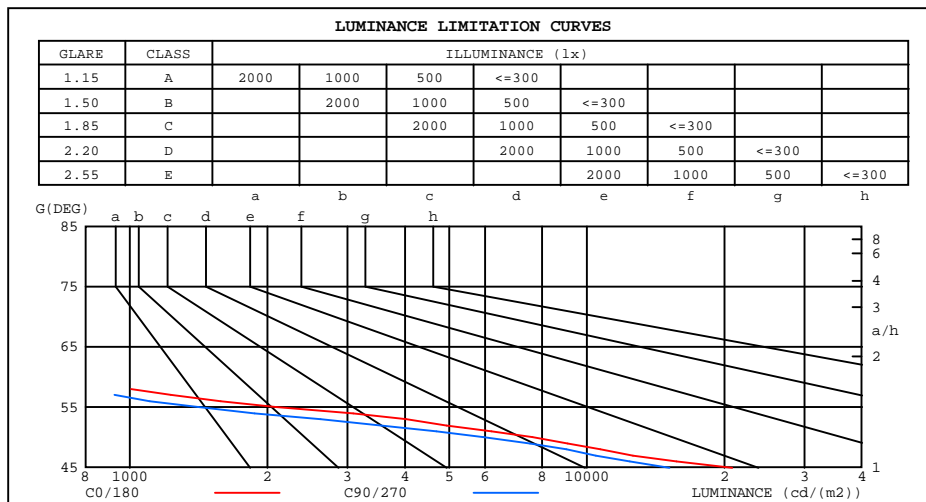
g	C0	C45	C90	C135	C180	C225	C270	C315	g	F zone	F total	%lum, lamp
10	2208	2188	2178	2123	2107	2146	2235	2222	0- 10	207.7	207.7	12.6,10.1
20	1997	1980	1897	1793	1690	1729	1883	1938	10- 20	592.3	799.9	48.6,39.1
30	868.3	868.5	791.3	708.3	610.8	608.5	688.3	759.0	20- 30	592.4	1392	84.7,68
40	143.1	141.1	129.0	109.3	89.05	89.60	95.65	113.4	30- 40	214.1	1606	97.7,78.4
50	16.21	14.53	12.66	11.03	9.901	10.05	11.16	13.45	40- 50	34.06	1640	99.8,80.1
60	1.041	0.9471	0.9561	0.8444	0.8790	0.8404	0.8896	0.9187	50- 60	3.698	1644	100,80.3
70	0.0468	0.0352	0.0354	0.0353	0.0476	0.0337	0.0363	0.0353	60- 70	0.3342	1645	100,80.3
80	0.0406	0.0253	0.0308	0.0242	0.0748	0.0278	0.0324	0.0265	70- 80	0.0346	1645	100,80.3
90	0	0	0	0	0	0	0	0	80- 90	0.0289	1645	100,80.3
100	0	0	0	0	0	0	0	0	90-100	0	1645	100,80.3
110	0	0	0	0	0	0	0	0	100-110	0	1645	100,80.3
120	0	0	0	0	0	0	0	0	110-120	0	1645	100,80.3
130	0	0	0	0	0	0	0	0	120-130	0	1645	100,80.3
140	0	0	0	0	0	0	0	0	130-140	0	1645	100,80.3
150	0	0	0	0	0	0	0	0	140-150	0	1645	100,80.3
160	0	0	0	0	0	0	0	0	150-160	0	1645	100,80.3
170	0	0	0	0	0	0	0	0	160-170	0	1645	100,80.3
180	0	0	0	0	0	0	0	0	170-180	0	1645	100,80.3
DEG	LUMINOUS INTENSITY:cd									UNIT:lm		

C Range: 0 - 360DEG
C Interval: 30.0DEG
Test Speed: HIGH
Temperature:25.3DEG
Operators:Zoe
Test Date:2022-2-26

g Range: 0 - 180DEG
Interval: 1.0DEG
Test System:EVERFINE GO-SPEX500_V1 SYSTEM V2.00.416
Humidity:65.0%
Test Distance:3.160m [K=1.0000]
Remarks: LAMP:CMU1013-0000-000N0U0A30G Ra:90
LENS:PM-1083C 50R
DRIVER:9290 028 089 500mA
30minutes warm-up

LUMINANCE LIMITATION CURVES

Test:U:220.29V I:0.0967A P:20.631W PF:0.9658 Freq:49.99Hz Lamp Flux:2048.03x1 lm		
NAME: 2118.532-ACOT-37	TYPE:	WEIGHT:
SPEC.:3000K	DIM.:	SERIAL No.:2202260112
MFR.: RISE	SUR.:0.003316625m2	Shielding Angle:



LUMINANCE cd/(m2)		
G(180)	C0/180	C90/270
85	124	96
80	71	54
75	49	38
70	41	31
65	316	74
60	628	577
55	2088	1412
50	7615	5941
45	20787	15166

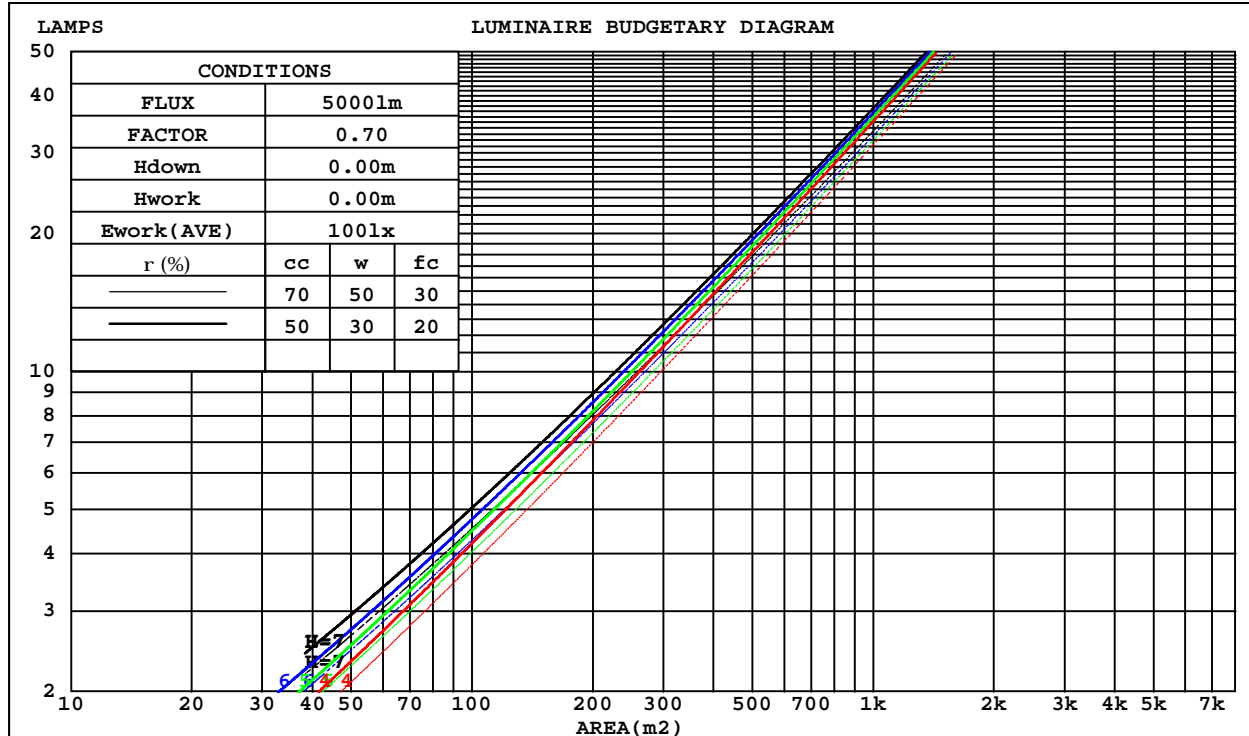
C Range: 0 - 360DEG
C Interval: 30.0DEG
Test Speed: HIGH
Temperature:25.3DEG
Operators:Zoe
Test Date:2022-2-26

G Range: 0 - 180DEG
G Interval: 1.0DEG
Test System:EVERFINE GO-SPEX500_V1 SYSTEM V2.00.416
Humidity:65.0%
Test Distance:3.160m [K=1.0000]
Remarks: LAMP:CMU1013-0000-000N0U0A30G Ra:90
LENS:PM-1083C 50R
DRIVER:9290 028 089 500mA
30minutes warm-up

CU AND LUMINAIRE BUDGETARY ESTIMATE DIAGRAM

Test:U:220.29V I:0.0967A P:20.631W PF:0.9658 Freq:49.99Hz Lamp Flux:2048.03x1 lm		
NAME: 2118.532-ACOT-37	TYPE:	WEIGHT:
SPEC.:3000K	DIM.:	SERIAL No.:2202260112
MFR.: RISE	SUR.:0.003316625m2	Shielding Angle:

rcc	80%			70%			50%			30%			10%			0
rw	50%	30%	10%	50%	30%	10%	50%	30%	10%	50%	30%	10%	50%	30%	10%	0
r fc	20%			20%			20%			20%			20%			0
RCR	RCR:Room Cavity Ratio Coefficients of Utilization(CU)															
0.0	.96	.96	.96	.93	.93	.93	.89	.89	.89	.85	.85	.85	.82	.82	.82	.80
1.0	.90	.88	.86	.88	.86	.85	.85	.83	.82	.82	.81	.80	.79	.78	.77	.76
2.0	.84	.81	.79	.83	.80	.78	.80	.78	.76	.78	.76	.74	.76	.74	.73	.72
3.0	.79	.75	.73	.78	.75	.72	.76	.73	.71	.74	.72	.70	.72	.70	.69	.67
4.0	.75	.71	.67	.74	.70	.67	.72	.69	.66	.70	.68	.66	.69	.67	.65	.64
5.0	.70	.66	.63	.70	.66	.63	.68	.65	.62	.67	.64	.62	.66	.63	.61	.60
6.0	.67	.62	.59	.66	.62	.59	.65	.61	.59	.64	.61	.58	.63	.60	.58	.57
7.0	.63	.59	.56	.63	.59	.56	.62	.58	.55	.61	.57	.55	.60	.57	.55	.54
8.0	.60	.56	.53	.60	.55	.53	.59	.55	.52	.58	.55	.52	.57	.54	.52	.51
9.0	.57	.53	.50	.57	.53	.50	.56	.52	.50	.55	.52	.49	.55	.52	.49	.48
10.0	.54	.50	.47	.54	.50	.47	.53	.50	.47	.53	.49	.47	.52	.49	.47	.46



C Range: 0 - 360DEG
C Interval: 30.0DEG
Test Speed: HIGH
Temperature:25.3DEG
Operators:Zoe
Test Date:2022-2-26

g Range: 0 - 180DEG
Interval: 1.0DEG
Test System:EVERFINE GO-SPEX500_V1 SYSTEM V2.00.416
Humidity:65.0%
Test Distance:3.160m [K=1.0000]
Remarks: LAMP:CMU1013-0000-000N0U0A30G Ra:90
LENS:PM-1083C 50R
DRIVER:9290 028 089 500mA
30minutes warm-up

WEC AND CCEC

Test:U:220.29V I:0.0967A P:20.631W PF:0.9658 Freq:49.99Hz Lamp Flux:2048.03x1 lm		
NAME: 2118.532-ACOT-37	TYPE:	WEIGHT:
SPEC.:3000K	DIM.:	SERIAL No.:2202260112
MFR.: RISE	SUR.:0.003316625m2	Shielding Angle:

rcc	80%			70%			50%			30%			10%			0
rw	50%	30%	10%	50%	30%	10%	50%	30%	10%	50%	30%	10%	50%	30%	10%	0
rfc	20%			20%			20%			20%			20%			0
RCR	RCR:Room Cavity Ratio Wall Exitance Coefficients(WEC)															
0.0																
1.0	.132	.075	.024	.126	.072	.023	.116	.067	.021	.107	.062	.020	.098	.057	.018	
2.0	.125	.069	.021	.121	.066	.020	.112	.062	.019	.104	.059	.018	.097	.055	.017	
3.0	.119	.063	.019	.115	.062	.019	.108	.058	.018	.101	.055	.017	.095	.053	.016	
4.0	.113	.059	.017	.110	.057	.017	.104	.055	.016	.098	.053	.016	.093	.050	.015	
5.0	.108	.055	.016	.105	.054	.016	.100	.052	.015	.095	.050	.015	.090	.048	.014	
6.0	.103	.052	.015	.100	.051	.015	.096	.049	.014	.092	.048	.014	.087	.046	.014	
7.0	.099	.049	.014	.096	.048	.014	.092	.047	.013	.088	.045	.013	.085	.044	.013	
8.0	.095	.046	.013	.093	.046	.013	.089	.044	.013	.086	.043	.013	.082	.042	.012	
9.0	.091	.044	.012	.089	.043	.012	.086	.042	.012	.083	.042	.012	.080	.041	.012	
10.0	.087	.042	.012	.086	.041	.012	.083	.041	.011	.080	.040	.011	.078	.039	.011	

rcc	80%			70%			50%			30%			10%			0
rw	50%	30%	10%	50%	30%	10%	50%	30%	10%	50%	30%	10%	50%	30%	10%	0
rfc	20%			20%			20%			20%			20%			0
RCR	RCR:Room Cavity Ratio						Ceiling Cavity Exitance Coefficients(CCEC)									
0.0	.153	.153	.153	.131	.131	.131	.089	.089	.089	.051	.051	.051	.016	.016	.016	
1.0	.137	.126	.117	.117	.108	.101	.080	.075	.070	.046	.043	.041	.015	.014	.013	
2.0	.124	.106	.092	.106	.092	.079	.073	.063	.055	.042	.037	.032	.013	.012	.011	
3.0	.113	.091	.074	.097	.079	.064	.067	.055	.045	.038	.032	.026	.012	.010	.009	
4.0	.104	.079	.060	.090	.068	.052	.062	.048	.037	.036	.028	.022	.011	.009	.007	
5.0	.097	.070	.049	.083	.060	.043	.057	.042	.030	.033	.025	.018	.011	.008	.006	
6.0	.091	.062	.041	.078	.054	.036	.054	.038	.025	.031	.022	.015	.010	.007	.005	
7.0	.086	.056	.035	.074	.048	.030	.051	.034	.022	.030	.020	.013	.010	.007	.004	
8.0	.081	.051	.030	.070	.044	.026	.048	.031	.019	.028	.018	.011	.009	.006	.004	
9.0	.077	.047	.026	.066	.040	.023	.046	.028	.016	.027	.017	.010	.009	.006	.003	
10.0	.073	.043	.023	.063	.037	.020	.044	.026	.014	.026	.016	.008	.008	.005	.003	

C Range: 0 - 360DEG
C Interval: 30.0DEG
Test Speed: HIGH
Temperature:25.3DEG
Operators:Zoe
Test Date:2022-2-26

g Range: 0 - 180DEG
g Interval: 1.0DEG
Test System:EVERFINE GO-SPEX500_V1 SYSTEM V2.00.416
Humidity:65.0%
Test Distance:3.160m [K=1.0000]
Remarks: LAMP:CMU1013-0000-000N0U0A30G Ra:90
LENS:PM-1083C 50R
DRIVER:9290 028 089 500mA
30minutes warm-up

UGR(Unified Glare Rating) Table

Test:U:220.29V I:0.0967A P:20.631W PF:0.9658 Freq:49.99Hz Lamp Flux:2048.03x1 lm										
NAME: 2118.532-ACOT-37					TYPE:			WEIGHT:		
SPEC.:3000K					DIM.:			SERIAL No.:2202260112		
MFR.: RISE					SUR.:0.003316625m2			Shielding Angle:		
ceiling/cavity	0.7	0.7	0.5	0.5	0.3	0.7	0.7	0.5	0.5	0.3
walls	0.5	0.3	0.5	0.3	0.3	0.5	0.3	0.5	0.3	0.3
working plane	0.2	0.2	0.2	0.2	0.2	0.2	0.2	0.2	0.2	0.2
Room dimensions	Viewed crosswise					Viewed endwise				
x = 2H y = 2H	19.7	20.6	20.0	20.8	20.9	19.1	20.0	19.4	20.2	20.3
3H	19.6	20.4	19.8	20.6	20.8	19.0	19.8	19.2	20.0	20.2
4H	19.5	20.2	19.8	20.4	20.7	18.9	19.6	19.2	19.9	20.1
6H	19.4	20.1	19.7	20.3	20.6	18.8	19.5	19.1	19.7	20.0
8H	19.4	20.0	19.7	20.3	20.5	18.8	19.4	19.1	19.7	19.9
12H	19.3	20.0	19.6	20.2	20.5	18.7	19.4	19.0	19.6	19.9
4H 2H	19.5	20.2	19.8	20.4	20.7	18.9	19.6	19.2	19.9	20.1
3H	19.3	20.0	19.6	20.2	20.5	18.7	19.4	19.0	19.6	19.9
4H	19.2	19.8	19.6	20.1	20.4	18.6	19.2	19.0	19.5	19.8
6H	19.1	19.6	19.5	20.0	20.3	18.5	19.0	18.9	19.4	19.7
8H	19.1	19.5	19.5	19.9	20.3	18.5	19.0	18.9	19.3	19.7
12H	19.0	19.4	19.4	19.8	20.2	18.4	18.9	18.8	19.2	19.6
8H 4H	19.1	19.5	19.5	19.9	20.3	18.5	19.0	18.9	19.3	19.7
6H	19.0	19.4	19.4	19.7	20.2	18.4	18.8	18.8	19.2	19.6
8H	18.9	19.2	19.3	19.7	20.1	18.3	18.7	18.8	19.1	19.5
12H	18.8	19.1	19.3	19.6	20.1	18.3	18.6	18.7	19.0	19.5
12H 4H	19.0	19.4	19.4	19.8	20.2	18.4	18.9	18.8	19.2	19.6
6H	18.9	19.2	19.3	19.7	20.1	18.3	18.7	18.8	19.1	19.5
8H	18.8	19.1	19.3	19.6	20.1	18.3	18.6	18.7	19.0	19.5
Variations with the observer position at spacings:										
S = 1.0H	+ 3.8 / -22.3					+ 4.0 / -23.3				
1.5H	+ 6.3 / -18.0					+ 6.6 / -18.7				
2.0H	+ 7.9 / -16.5					+ 7.3 / -16.3				

CIE Pub.117, 2048 lm Total Lamp Luminous Flux Corrected ($8\log(F/F_0) = 2.5$)
Area: 0.00331663 m2

C Range: 0 - 360DEG
C Interval: 30.0DEG
Test Speed: HIGH
Temperature:25.3DEG
Operators:Zoe
Test Date:2022-2-26

g Range: 0 - 180DEG
g Interval: 1.0DEG
Test System:EVERFINE GO-SPEX500_V1 SYSTEM V2.00.416
Humidity:65.0%
Test Distance:3.160m [K=1.0000]
Remarks: LAMP:CMU1013-0000-000N0U0A30G Ra:90
LENS:PM-1083C 50R
DRIVER:9290 028 089 500mA
30minutes warm-up

UTILIZATION FACTORS TABLE

Test:U:220.29V I:0.0967A P:20.631W PF:0.9658 Freq:49.99Hz Lamp Flux:2048.03x1 lm		
NAME: 2118.532-ACOT-37	TYPE:	WEIGHT:
SPEC.:3000K	DIM.:	SERIAL No.:2202260112
MFR.: RISE	SUR.:0.003316625m2	Shielding Angle:

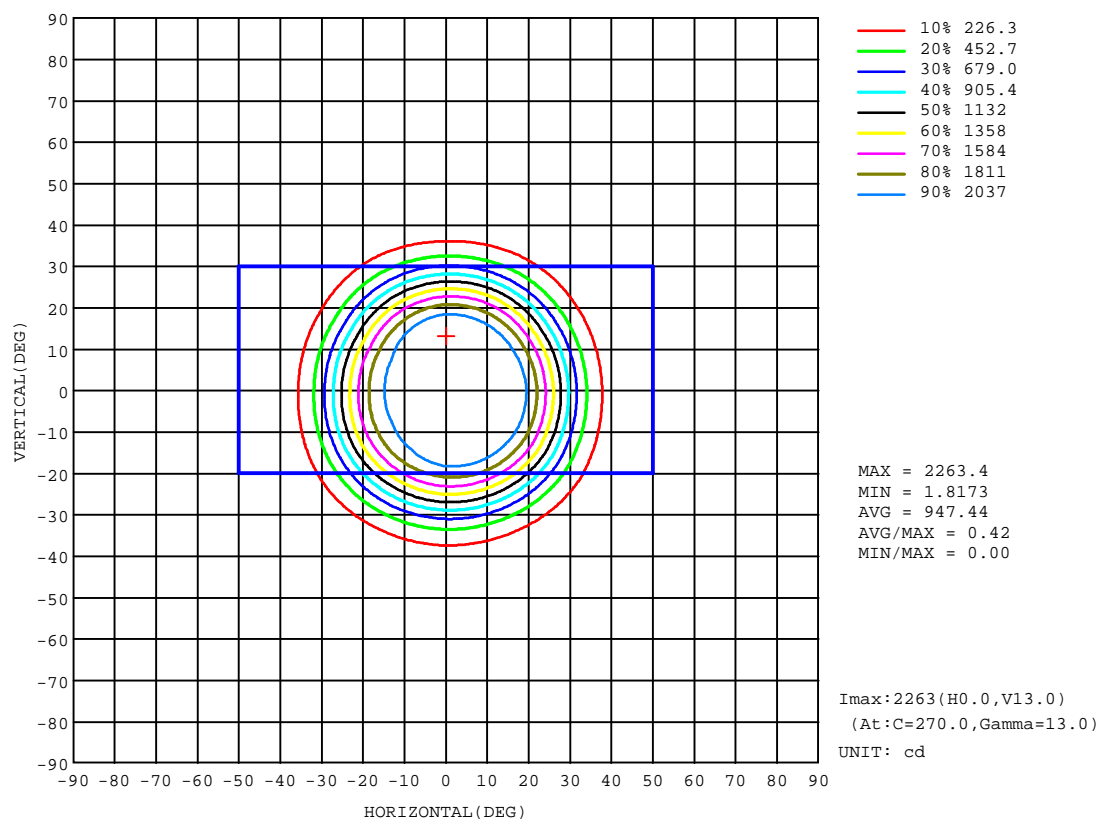
REFLECTANCE										
Ceiling	0.8	0.8	0.8	0.7	0.7	0.7	0.5	0.5	0.5	0
Walls	0.7	0.5	0.3	0.7	0.5	0.3	0.7	0.5	0.3	0
Working plane	0.2	0.2	0.2	0.2	0.2	0.2	0.2	0.2	0.2	0
ROOM INDEX	UTILIZATION FACTORS(PERCENT) $k(RI) \times RCR = 5$									
k = 0.60	72	68	65	72	68	65	71	67	65	62
0.80	78	74	71	78	74	71	77	73	71	68
1.00	81	77	74	81	77	74	79	77	74	71
1.25	84	80	78	83	80	78	82	79	77	74
1.50	86	83	80	85	82	80	83	81	79	76
2.00	88	85	83	87	84	82	85	83	81	77
2.50	89	86	84	88	85	83	86	84	82	77
3.00	90	88	86	89	87	85	86	85	83	78
4.00	92	90	88	90	89	87	87	86	85	79
5.00	93	91	90	91	90	89	88	87	86	80
ROOM INDEX	UF(total)									Direct
According to DIN EN 13032-2 2004			Suspended					SHRNOM = 1.25		

C Range: 0 - 360DEG
C Interval: 30.0DEG
Test Speed: HIGH
Temperature:25.3DEG
Operators:Zoe
Test Date:2022-2-26

g Range: 0 - 180DEG
g Interval: 1.0DEG
Test System:EVERFINE GO-SPEX500_V1 SYSTEM V2.00.416
Humidity:65.0%
Test Distance:3.160m [K=1.0000]
Remarks: LAMP:CMU1013-0000-000N0U0A30G Ra:90
LENS:PM-1083C 50R
DRIVER:9290 028 089 500mA
30minutes warm-up

ISOCANDELA DIAGRAM

Test:U:220.29V I:0.0967A P:20.631W PF:0.9658 Freq:49.99Hz Lamp Flux:2048.03x1 lm		
NAME: 2118.532-ACOT-37	TYPE:	WEIGHT:
SPEC.:3000K	DIM.:	SERIAL No.:2202260112
MFR.: RISE	SUR.:0.003316625m2	Shielding Angle:

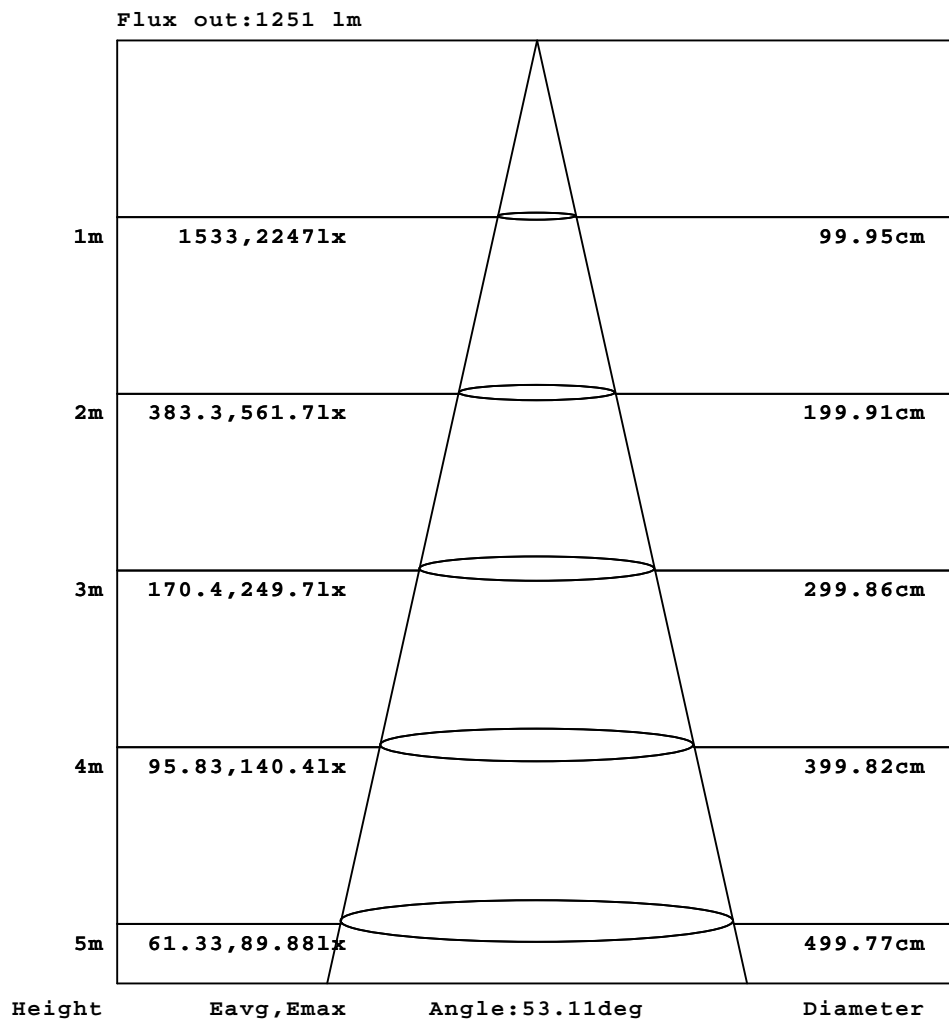


C Range: 0 - 360DEG
C Interval: 30.0DEG
Test Speed: HIGH
Temperature:25.3DEG
Operators:Zoe
Test Date:2022-2-26

deg Range: 0 - 180DEG
deg Interval: 1.0DEG
Test System:EVERFINE GO-SPEX500_V1 SYSTEM V2.00.416
Humidity:65.0%
Test Distance:3.160m [K=1.0000]
Remarks: LAMP:CMU1013-0000-000N0U0A30G Ra:90
LENS:PM-1083C 50R
DRIVER:9290 028 089 500mA
30minutes warm-up

AAI Figure

Test:U:220.29V I:0.0967A P:20.631W PF:0.9658 Freq:49.99Hz Lamp Flux:2048.03x1 lm		
NAME: 2118.532-ACOT-37	TYPE:	WEIGHT:
SPEC.:3000K	DIM.:	SERIAL No.:2202260112
MFR.: RISE	SUR.:0.003316625m2	Shielding Angle:



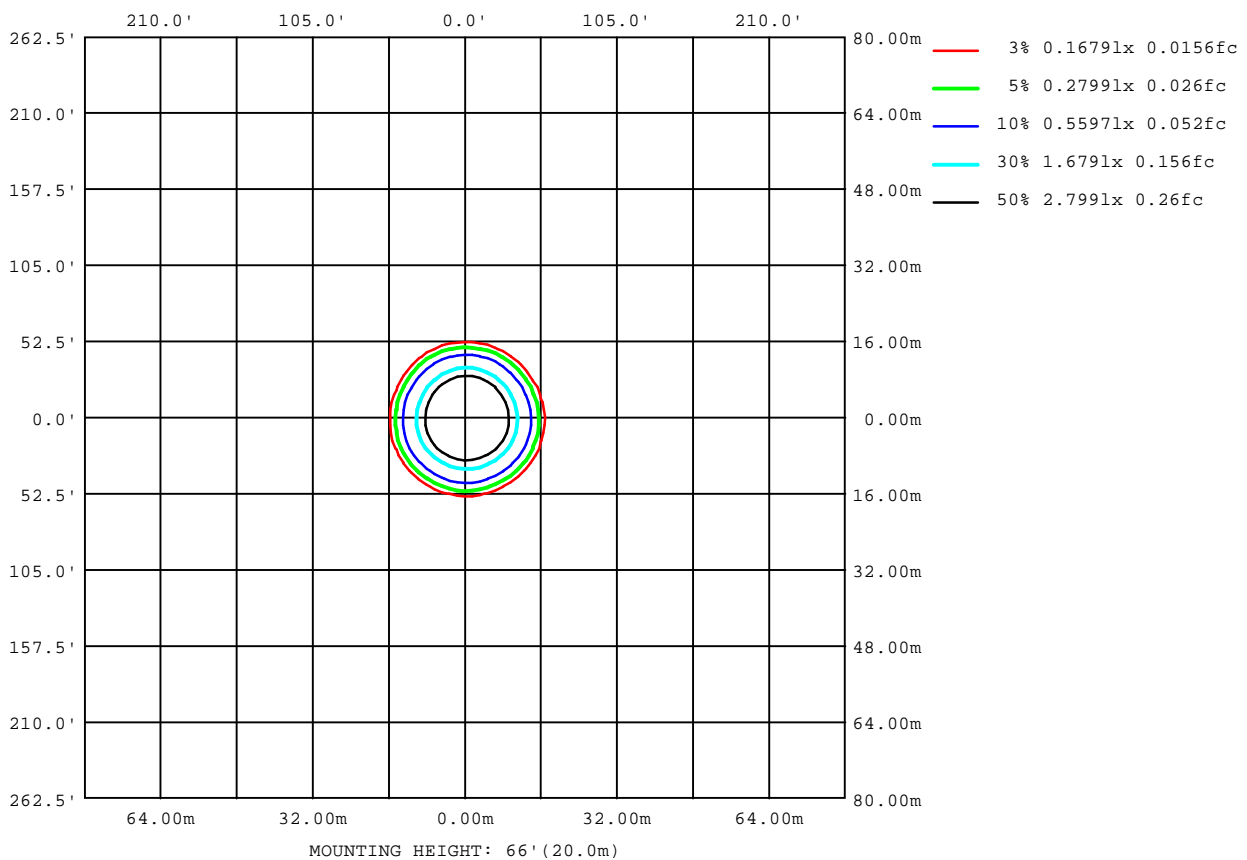
Note:The Curves indicate the illuminated area and the average illumination when the luminaire is at different distance.

C Range: 0 - 360DEG
C Interval: 30.0DEG
Test Speed: HIGH
Temperature:25.3DEG
Operators:Zoe
Test Date:2022-2-26

g Range: 0 - 180DEG
Interval: 1.0DEG
Test System:EVERFINE GO-SPEX500_V1 SYSTEM V2.00.416
Humidity:65.0%
Test Distance:3.160m [K=1.0000]
Remarks: LAMP:CMU1013-0000-000N0U0A30G Ra:90
LENS:PM-1083C 50R
DRIVER:9290 028 089 500mA
30minutes warm-up

ISOLUX DIAGRAM

Test:U:220.29V I:0.0967A P:20.631W PF:0.9658 Freq:49.99Hz Lamp Flux:2048.03x1 lm		
NAME: 2118.532-ACOT-37	TYPE:	WEIGHT:
SPEC.:3000K	DIM.:	SERIAL No.:2202260112
MFR.: RISE	SUR.:0.003316625m2	Shielding Angle:



C Range: 0 - 360DEG
C Interval: 30.0DEG
Test Speed: HIGH
Temperature:25.3DEG
Operators:Zoe
Test Date:2022-2-26

g Range: 0 - 180DEG
g Interval: 1.0DEG
Test System:EVERFINE GO-SPEX500_V1 SYSTEM V2.00.416
Humidity:65.0%
Test Distance:3.160m [K=1.0000]
Remarks: LAMP:CMU1013-0000-000N0U0A30G Ra:90
LENS:PM-1083C 50R
DRIVER:9290 028 089 500mA
30minutes warm-up

LED Avg.L Report

Test:U:220.29V I:0.0967A P:20.631W PF:0.9658 Freq:49.99Hz Lamp Flux:2048.03x1 lm		
NAME: 2118.532-ACOT-37	TYPE:	WEIGHT:
SPEC.:3000K	DIM.:	SERIAL No.:2202260112
MFR.: RISE	SUR.:0.003316625m2	Shielding Angle:

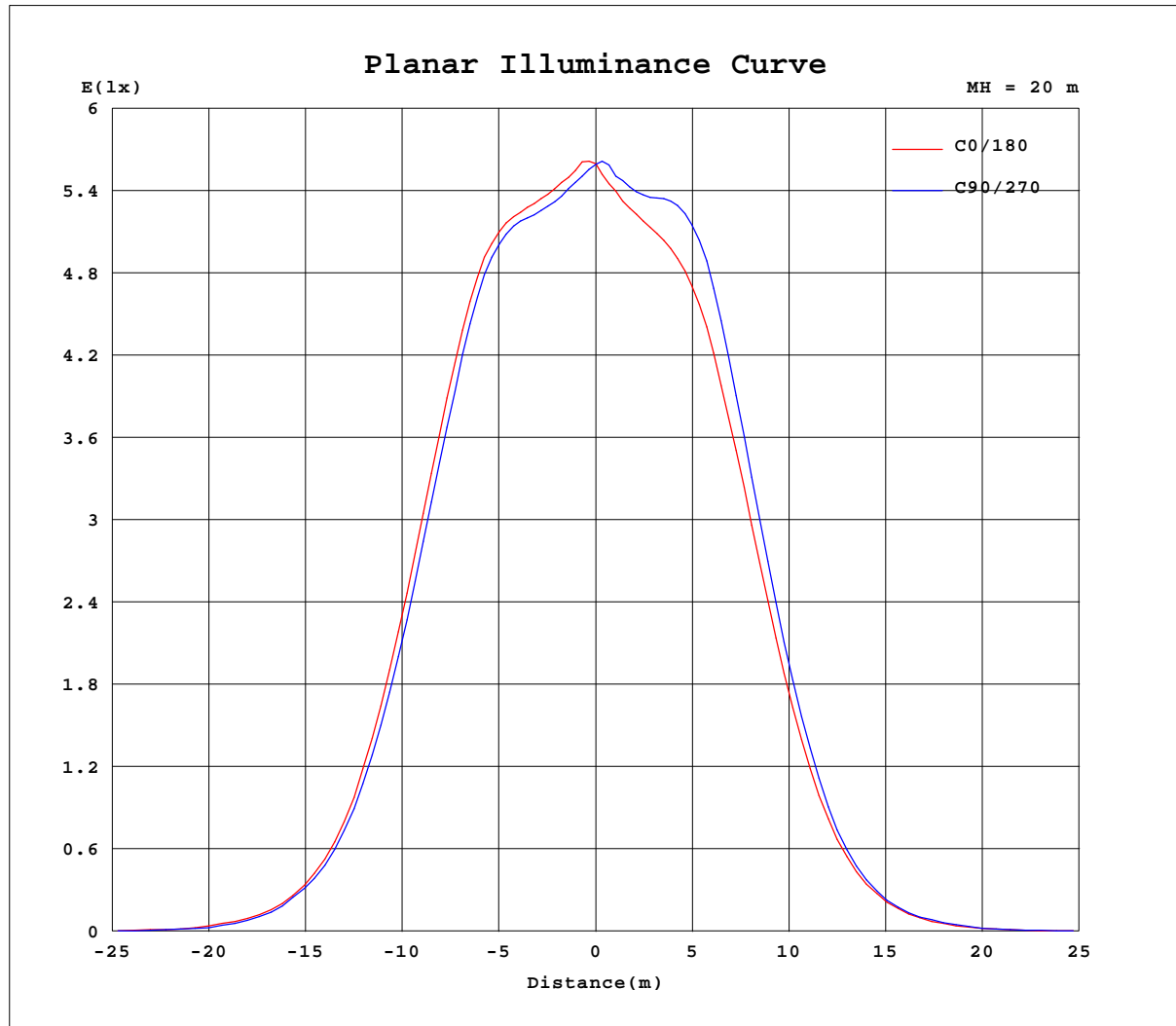
AvgL	cd/m2
L_0~180(65)av	181
L_0~180(75)av	51
L_0~180(85)av	124
L_90~270(65)av	156
L_90~270(75)av	39
L_90~270(85)av	101
L_45(65)av	166
L_45(75)av	32
L_45(85)av	75

Standard: GB/T 29293-2012

C Range: 0 - 360DEG
C Interval: 30.0DEG
Test Speed: HIGH
Temperature:25.3DEG
Operators:Zoe
Test Date:2022-2-26

g Range: 0 - 180DEG
Interval: 1.0DEG
Test System:EVERFINE GO-SPEX500_V1 SYSTEM V2.00.416
Humidity:65.0%
Test Distance:3.160m [K=1.0000]
Remarks: LAMP:CMU1013-0000-000N0U0A30G Ra:90
LENS:PM-1083C 50R
DRIVER:9290 028 089 500mA
30minutes warm-up

Planar Illuminance Curve



C Range: 0 - 360DEG
 C Interval: 30.0DEG
 Test Speed: HIGH
 Temperature: 25.3DEG
 Operators: Zoe
 Test Date: 2022-2-26

g Range: 0 - 180DEG
 g Interval: 1.0DEG
 Test System: EVERFINE GO-SPEX500_V1 SYSTEM V2.00.416
 Humidity: 65.0%
 Test Distance: 3.160m [K=1.0000]
 Remarks: LAMP: CMU1013-0000-000N0U0A30G Ra: 90
 LENS: PM-1083C 50R
 DRIVER: 9290 028 089 500mA
 30minutes warm-up

LUMINOUS DISTRIBUTION INTENSITY DATA

Test:U:220.29V I:0.0967A P:20.631W PF:0.9658 Freq:49.99Hz Lamp Flux:2048.03x1 lm		
NAME: 2118.532-ACOT-37	TYPE:	WEIGHT:
SPEC.:3000K	DIM.:	SERIAL No.:2202260112
MFR.: RISE	SUR.:0.003316625m2	Shielding Angle:

Table--1

UNIT: cd

C(°) g (°)	0	30	60	90	120	150	180	210	240	270	300	330						
0	2236	2236	2236	2236	2236	2236	2236	2236	2236	2236	2236	2236						
5	2206	2194	2183	2167	2149	2138	2132	2140	2170	2195	2212	2215						
10	2208	2187	2188	2178	2136	2111	2107	2117	2175	2235	2225	2218						
15	2224	2203	2205	2181	2099	2051	2027	2032	2131	2234	2226	2219						
20	1997	2001	1960	1897	1823	1764	1690	1679	1779	1883	1922	1955						
25	1480	1518	1438	1372	1300	1239	1148	1122	1214	1289	1366	1410						
30	868	898	839	791	735	681	611	580	637	688	731	788						
35	384	402	366	353	317	291	254	238	264	275	300	332						
40	143	149	133	129	115	104	89.0	86.6	92.6	95.6	105	122						
45	48.7	47.2	38.3	35.5	32.7	30.2	26.6	25.0	28.2	29.9	34.8	41.6						
50	16.2	15.5	13.6	12.7	11.2	10.9	9.90	9.66	10.4	11.2	12.3	14.6						
55	3.97	3.66	2.98	2.69	2.37	2.37	2.31	2.37	2.48	2.75	2.86	3.47						
60	1.04	1.00	0.90	0.96	0.83	0.86	0.88	0.86	0.82	0.89	0.92	0.91						
65	0.44	0.37	0.25	0.10	0.07	0.05	0.07	0.07	0.23	0.33	0.46	0.37						
70	0.05	0.03	0.04	0.04	0.04	0.04	0.05	0.04	0.03	0.04	0.03	0.04						
75	0.04	0.03	0.03	0.03	0.03	0.03	0.05	0.03	0.03	0.04	0.02	0.03						
80	0.04	0.02	0.03	0.03	0.02	0.02	0.07	0.03	0.02	0.03	0.02	0.03						
85	0.04	0.02	0.02	0.03	0.02	0.03	0.04	0.02	0.02	0.03	0.02	0.03						
90	0.00	0.00	0.00	0.00	0.00	0.00	0.00	0.00	0.00	0.00	0.00	0.00						
95	0.00	0.00	0.00	0.00	0.00	0.00	0.00	0.00	0.00	0.00	0.00	0.00						
100	0.00	0.00	0.00	0.00	0.00	0.00	0.00	0.00	0.00	0.00	0.00	0.00						
105	0.00	0.00	0.00	0.00	0.00	0.00	0.00	0.00	0.00	0.00	0.00	0.00						
110	0.00	0.00	0.00	0.00	0.00	0.00	0.00	0.00	0.00	0.00	0.00	0.00						
115	0.00	0.00	0.00	0.00	0.00	0.00	0.00	0.00	0.00	0.00	0.00	0.00						
120	0.00	0.00	0.00	0.00	0.00	0.00	0.00	0.00	0.00	0.00	0.00	0.00						
125	0.00	0.00	0.00	0.00	0.00	0.00	0.00	0.00	0.00	0.00	0.00	0.00						
130	0.00	0.00	0.00	0.00	0.00	0.00	0.00	0.00	0.00	0.00	0.00	0.00						
135	0.00	0.00	0.00	0.00	0.00	0.00	0.00	0.00	0.00	0.00	0.00	0.00						
140	0.00	0.00	0.00	0.00	0.00	0.00	0.00	0.00	0.00	0.00	0.00	0.00						
145	0.00	0.00	0.00	0.00	0.00	0.00	0.00	0.00	0.00	0.00	0.00	0.00						
150	0.00	0.00	0.00	0.00	0.00	0.00	0.00	0.00	0.00	0.00	0.00	0.00						
155	0.00	0.00	0.00	0.00	0.00	0.00	0.00	0.00	0.00	0.00	0.00	0.00						
160	0.00	0.00	0.00	0.00	0.00	0.00	0.00	0.00	0.00	0.00	0.00	0.00						
165	0.00	0.00	0.00	0.00	0.00	0.00	0.00	0.00	0.00	0.00	0.00	0.00						
170	0.00	0.00	0.00	0.00	0.00	0.00	0.00	0.00	0.00	0.00	0.00	0.00						
175	0.00	0.00	0.00	0.00	0.00	0.00	0.00	0.00	0.00	0.00	0.00	0.00						
180	0.00	0.00	0.00	0.00	0.00	0.00	0.00	0.00	0.00	0.00	0.00	0.00						

C Range: 0 - 360DEG
C Interval: 30.0DEG
Test Speed: HIGH
Temperature:25.3DEG
Operators:Zoe
Test Date:2022-2-26

g Range: 0 - 180DEG
g Interval: 1.0DEG
Test System:EVERFINE GO-SPEX500_V1 SYSTEM V2.00.416
Humidity:65.0%
Test Distance:3.160m [K=1.0000]
Remarks: LAMP:CMU1013-0000-000N0U0A30G Ra:90
LENS:PM-1083C 50R
DRIVER:9290 028 089 500mA
30minutes warm-up